

## Draw a bee game

This simple dice game can be used to help reinforce knowledge of bee anatomy. It is great for science or maths groups, or just as a fun activity.

The game is presented in two versions.

**Draw a bee #1** is a quicker and easier version. It could be completed by a child in six rolls.

When children roll a number, they draw all the matching parts; for example, if they roll a 4, they draw all four wings.

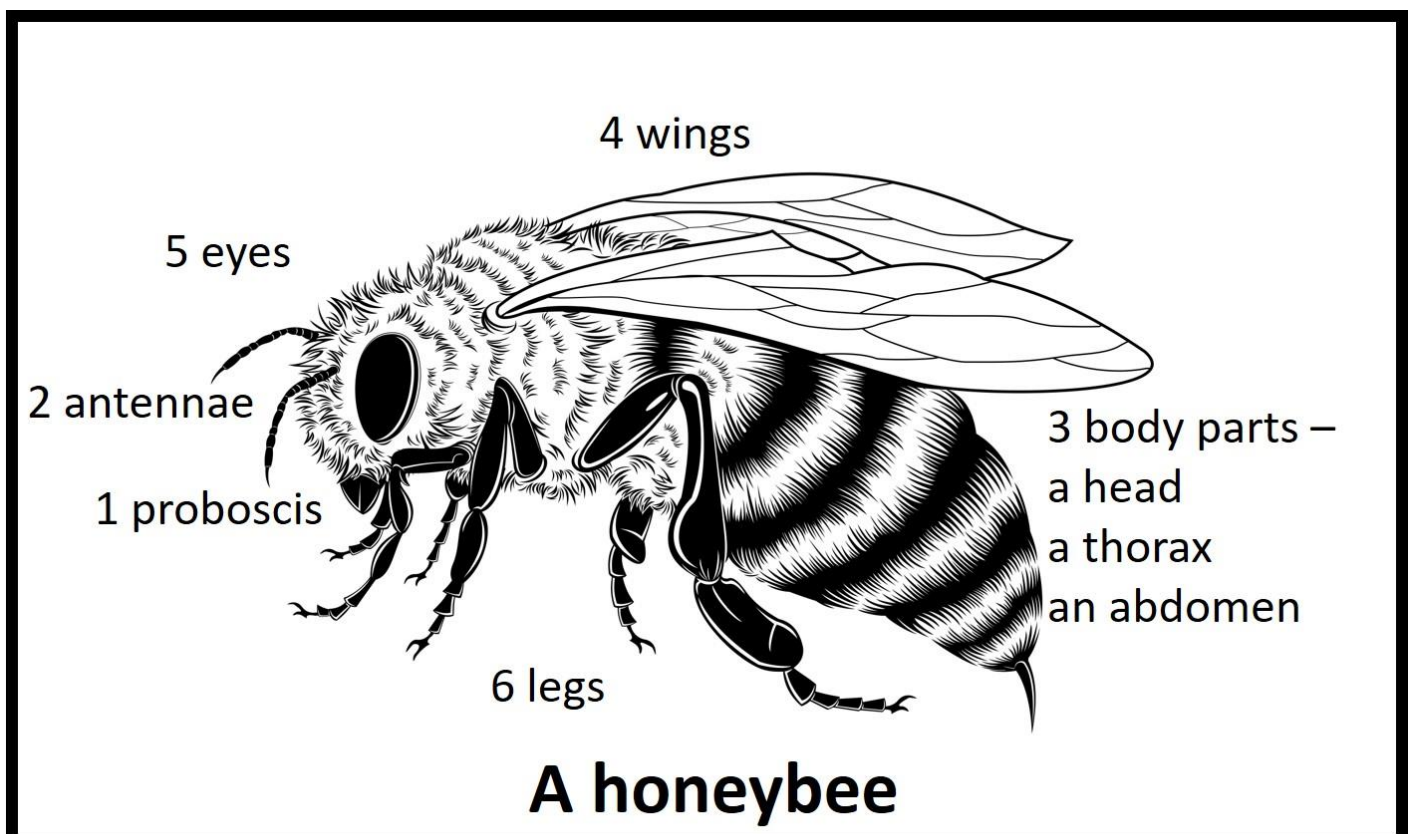
The only proviso is that they must roll a 3 to start with the three body parts, to which the other features are added.

**Draw a bee #2** takes more time and rolls. As the correct number must be rolled for each individual body part, it will take a minimum of 21 rolls for each player.

Choose the version that suits the ages of your children and your time allocation best.

To add interest to the game, children could keep a tally of the number of rolls required to complete a bee.

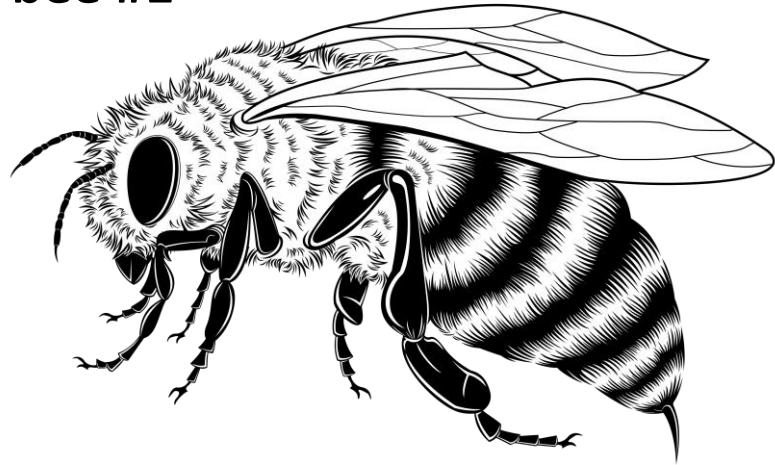
Print the two sets of instructions and laminate for distribution to groups when ready to play. Store each set of instructions with a dice, some paper, and a collection of pencils and the game is ready to play at any time.



## Draw a bee #1

### You need:

a dice  
coloured pencils  
a piece of paper  
some friends to play with



### How to play:

1. Take turns to roll the dice.
2. On your turn, draw the body parts that goes with the number you roll. If you have already drawn the part, you miss your turn.
3. The first person to draw their entire bee is the winner.

### Note:

You need a 3 to start.

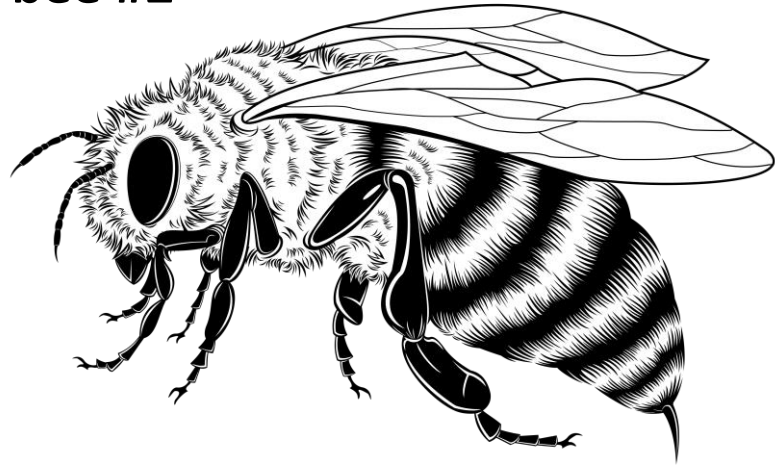
You must draw the head, thorax, and abdomen first!

1. proboscis	4. wings
2. antennae	5. eyes
3. body parts	6. legs

## Draw a bee #2

### You need:

a dice  
coloured pencils  
a piece of paper  
some friends to play with



### How to play:

1. Take turns to roll the dice.
2. On your turn, draw a body part that goes with the number you roll. If you have already drawn the correct number of parts, you miss your turn.
3. The first person to draw their entire bee is the winner.

### Note:

You need a 3 to start.

You must draw the thorax first!

You need a head before you can add the eyes, antennae, and proboscis.

1. Proboscis	A bee has <i>one</i> proboscis	4. Wings	A bee has <i>four</i> wings
2. Antennae	A bee has <i>two</i> antennae	5. Eyes	A bee has <i>five</i> eyes
3. Body parts	A bee has <i>three</i> body parts – head, thorax, abdomen	6. Legs	A bee has <i>six</i> legs